

Remote Control Loop Performance Monitoring and Tuning

Mining & Metals operations are often overworked and ill-equipped to monitor and maintain the hundreds of control loops and instruments for which they are responsible. This problem can affect the performance of your plant and can have a negative impact on your assets maintenance.

XPS is fully equipped to monitor part or all your controls assets remotely from Sudbury, Ontario, Canada. Our Experts have been monitoring multiple operations all around the world for the past 3 years.

When it become costly and overly complicated to have permanent experts on-site we are able to connect our system to your historian, DCS or SCADA and help you to focus and prioritize your efforts.

With our unique service, we see your issues in a proactive way and guide you in resolving them. Then we are able to configure your own KPIs and dashboard to react to any drift in performance.

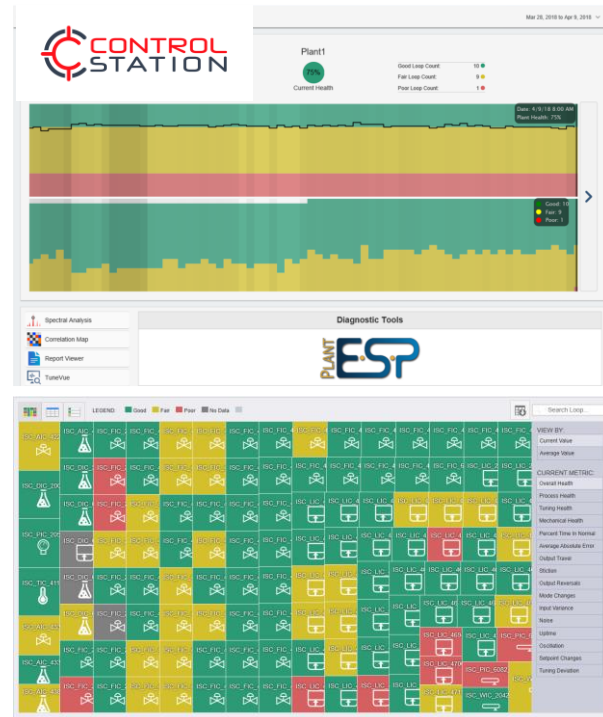
It's not a black box! You see the same metrics as us. The difference with other solutions: You're in good hands with XPS experts working in full coordination with your staff to monitor your control loops and optimize the lagging controls.

Summary of the services:

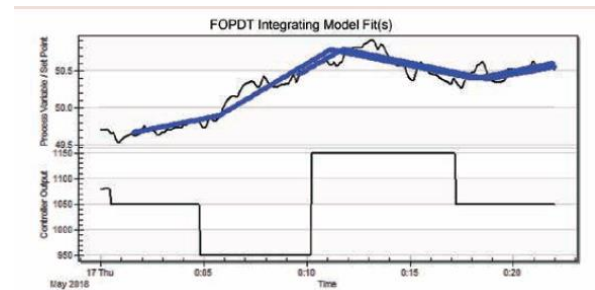
- Configuration of a complete Remote Control Loop Performance Monitoring system.
- Monitoring control health and drifts.
- Focusing on under performing loops.
- Recommending tuning and maintenance improvements.
- We are a mining company: we now your constraints and are focused on solutions.

References:

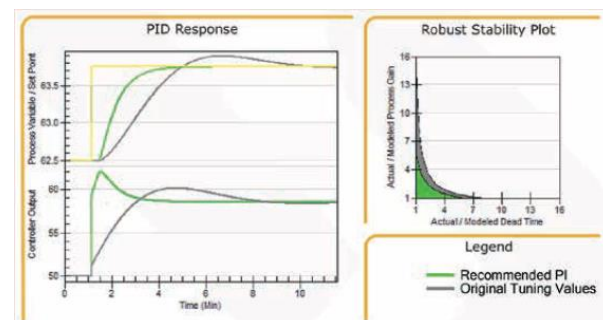
<https://www.xps.ca/media/case-studies/48-slag-end-offgas-flow-controller>
<https://www.xps.ca/files/37/XPS-Bulletin/249/XPSissue20Summer-Edition.pdf>



Compares performance to 'best practices' continuously



Advanced Control Modeling



Tuning strategies

XPS has an official partnership with Control Station to provide a first class solution.