

## Plant Support

The Plant Support team offers a range of services focusing on in-plant, hands-on technical assistance. Experienced metallurgists are available to assist with commissioning activities, process optimisation, process control, process review and de-bottlenecking, project management, as well as troubleshooting, concentrate marketing development, plant surveys, sampling and modelling. The Plant Support team can also source metallurgists and technicians on contract to support your needs.



Raglan Mill Focus



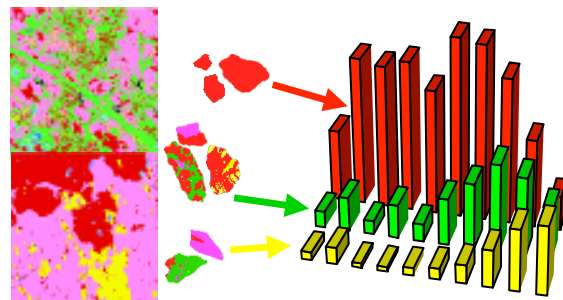
PPL (Anglo) IsaMill Control Focus

**Plant Support** is a service from XPS. It focuses on in-plant hands on technical assistance and can cover:

- Commissioning
- Process Control & Process Optimisation
- Process Audits, Review & Debottlenecking
- Project Management & Project Peer Review
- Troubleshooting & Plant Diagnostics
- Contract Metallurgist / Technician / Control Engineer
- Plant Surveys / Sampling & Plant Trials
- Metal Accounting Review / Audit
- Plant Operations Review / Audit

*The recommendations and solutions implemented are based upon solid engineering practice and operating experience across Glencore's Pilot Plants, Mines, Mills, Hydrometallurgical and Pyrometallurgical processes.*

*Our method and approach is **plant proven**.*



**QEMSCAN** technology is an automated mineralogical technique used in both ore characterisation studies and in the metallurgical support of plant audits or lab flotation testwork programs.

These mineralogical measurements are a critical component in identifying opportunities for improved plant performance and in flowsheet design.

### Some Key Mineralogical Capabilities

The following are key deliverables provided by QEMSCAN analyses:

- Size by size liberation for minerals of interest
- Modal mineralogy
- Element department by mineral
- Grain sizes for minerals of interest
- Mineral associations
- Mineral recoveries
- Colour images

Periodic Composite Monitoring is used as a flexible diagnostic tool with parameters that are chosen in consultation with the client. It is used in lieu of a full fledged plant survey but is similar to a Benchmark Survey in terms of the types of data reported and confidence level.

